

Website: www.forlfp.org.uk
Email: info@forlfp.org.uk

THE FRIENDS OF RAPHAEL PARK
AND LODGE FARM PARK



NEWSLETTER

SPRING 2015

MINIATURE RAILWAY

We've been chatting with the Havering Miniature Railway Club with a view to install a miniature railway to Lodge Farm Park. We think it's a great idea and would like to hear if you do too. You may have seen the volunteers and locomotives in action in the park over the Easter Bank Holiday, but if you didn't and would like to see their proposal please come along to our next meeting on 18th May in The Lodge, or email the Friends; info@forlfp.org.uk - Subject: Miniature Railway. Please provide your address and contact details, and indicate if you would like to see the draft proposal or a simple Yes or No thank you.

And now, a few words from Havering Miniature Railway Club,

Whilst only recently formed, the members of the Havering Miniature Railway Club have a lot of experience in building, operating and maintaining these lines, which are in effect real railways in miniature. All of our present small group are still members of other Model Engineering or railway Clubs.

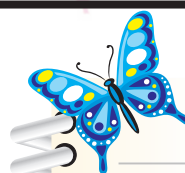
Havering Parks Department and the Friends of the Raphael & Lodge Park both agree this would be a great amenity for Lodge Farm Park. Our proposed line in Lodge Farm Park will operate at different times with steam, electric and diesel locomotives. The trains are able to carry adults and children of all ages and in operation travel at approx 6-8 mph maximum speed, a brisk walking pace. The whole line when complete will give a ride of 500 - 600 metres in length.

We intend to operate the line on Summer Sunday afternoons and Bank and school holidays, depending on the number of railway staff available. It would also be possible to operate it for special Charitable causes, children with learning difficulties, those with special needs and other groups.

We are a non-profit making club although there will be a small charge for journeys. The cost of building the railway will be borne by the members. Any money collected will be used to keep the railway and equipment in good presentable and safe condition and the remainder given to charitable causes.

We sincerely hope you enjoyed our demonstration over the Bank Holiday and look forward to hearing your views,

*Yours Truly,
Havering Miniature
Railway Club*



Coming Events

Saturday 2nd May 2015 | 7:00pm

Spring Quiz Night - Venue: St. Michaels Hall. Fish & chip

supper. Email info@forlfp.org.uk for information and tickets

Monday 18th May 2015 | 7:30 - 9:00pm

Meeting - Venue: The Lodge, Raphael Park, Friends Meeting Room

1st Tuesday of each month | 10:00am

Litter Pick - Fresh air, exercise and feel good, all in just an

hour! We meet at Raphael's café, with all tools supplied.

3rd Sunday of each month | 10:00am

Litter Pick - So if you couldn't make Tuesday's litter pick,

no excuse why not join us Sunday! We meet at

Raphael's playground, all tools supplied.

We just need hands!

CH2MHILL DONATION

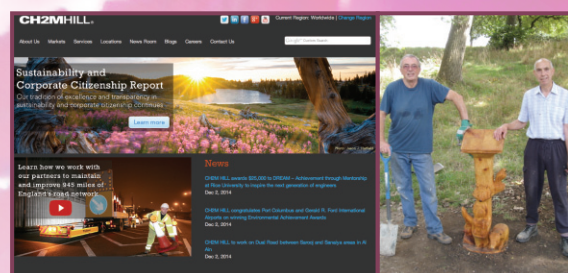
CH2MHILL®

FOUNDATION

We were very kindly awarded \$750 by CH2MHill Foundation, we were delighted when our Ian Miller was informed that his employers appreciated the work he has been doing for the Friends and has rewarded us handsomely. We are planning to spend some of the monies on new trees for the forest and perennials to help the banking around our Percy & Friends Picnic Spot.

Our Many thanks to Ian for all his work, time and dedication and our many thanks to CH2MHill Foundation for their very kind donation.

www.ch2mhillfoundation.org



MUSIC IN THE PARK 2014 FREE SUMMER CONCERT A MEGA SUCCESS

A fabulous lazy, sunny, Sunday afternoon, what could be nicer than plotting up on a piece of grass with your picnic or taking a table at our hot food stands listening to great music whilst the children play and take rides on the funfair. Well that's just what over 9000 of you did and we know you all really enjoyed it too, we've received wonderful feedback, our thanks to you for making our concert such a roaring success.

For us, what an exciting event to plan, the first since Raphael park's fabulous refurbishment, and also the largest event the Friends had planned so far, and it went without a hitch. Four bands performed; Copper Face Jack, The Serenaders, Los Musicos and the extremely popular Houndogs. All the bands put on a great performance, with the Houndogs stealing the show with their antics on and, jumping off stage! The crowd went wild all wanting to join in the dancing. The Friends, and Pimms & Beer marquee were as popular as ever, we thank all that visited and brought our sweet strawberries and cream, delicious cupcakes and a glass or two from our bar, which is how we raise the funds to run the show. Our many thanks to all those who donated to us, including; ACPreou Engineers, Gidea Park Autos, Kall Kwik Romford, Kilnbridge Construction, Lidl, Lola's Cupcakes, Meat Express, Tiger Lily Florist, Time 107.5FM and Wokabout Noodle and Coffee Bar.

Without whom we couldn't get the event off the ground.

We've now collated all pictures taken on the day, please visit our website www.forlp.org.uk to take a peek and catch up with what we've been doing and future events. And if you would like to share your photos please visit our facebook and twitter pages. We're now planning Music in the Park 2016 and can confirm The Houndogs are booked!! Look forward to seeing you on Sunday 24th July 2016.



RAPHAEL'S CAFE & RESTAURANT

We are delighted to say Raphael's Cafe & Charcoal Grill Restaurant is a huge success, this family owned business have created a fabulous eatery overlooking the lake. It's wonderful to see so many people sharing our park whilst sitting on the terrace watching the lake twinkle in sun, and of course the restaurant can now boast an evening spectacle too as the Friends have illuminated the lake fountain from dusk, we couldn't think of a better combination.



GREEN FLAGS

It was with great pride that Julia the Chairman for the Friends of Raphael & Lodge Farm Parks was able to hoist two green flags this year. Both of our lovely parks were awarded these fantastic accolades. We have held a Green Flag in Lodge Farm Park since 2008 but were absolutely delighted when we were awarded Green Flag in Raphael Park this year. Our many thanks to all that helped this happen.



KEEP IN TOUCH

Write: FORP, 12a Bridge Close, Romford, Essex, RM7 0AU

Email: info@forlp.org.uk • **Follow us** on Facebook & Twitter

LAKE ILLUMINATION



We were delighted that Cllr. Wallace and Gary Baker from Veolia North Thames Trust, were able to join us for the official switch on of our new lake feature. Our many thanks to Veolia North Thames Trust for their kind donation helping us to provide this beautiful feature to our lake. The fountain will run from 7am to 11pm daily providing a fetching backdrop for evening walkers and the diners in Raphael's charcoal grill.



WINTER QUIZ NIGHT

The Winter nights were drawing in and the cold could dampen our enthusiasm but, no not our first class quizzers! All seats taken, tables full of nibbles and drinks ready for the quiz sheets to arrive... We had a great night, lots of laughs and new winners too! Well done 'Del Boy Plonkers' that's a first for you. Our thanks to all that joined us, we raised a fantastic £600! Our many thanks to Tiger Lily Florist, Main Road, Romford, and Wok-About for their very kind donations. If you do find the need for flowers Lisa would be very glad to see you, and when your next in Romford Market why not visit David and his team for hot food and drinks.



LOTTERY FUNDED

Designed and printed by Kall Kwik Romford